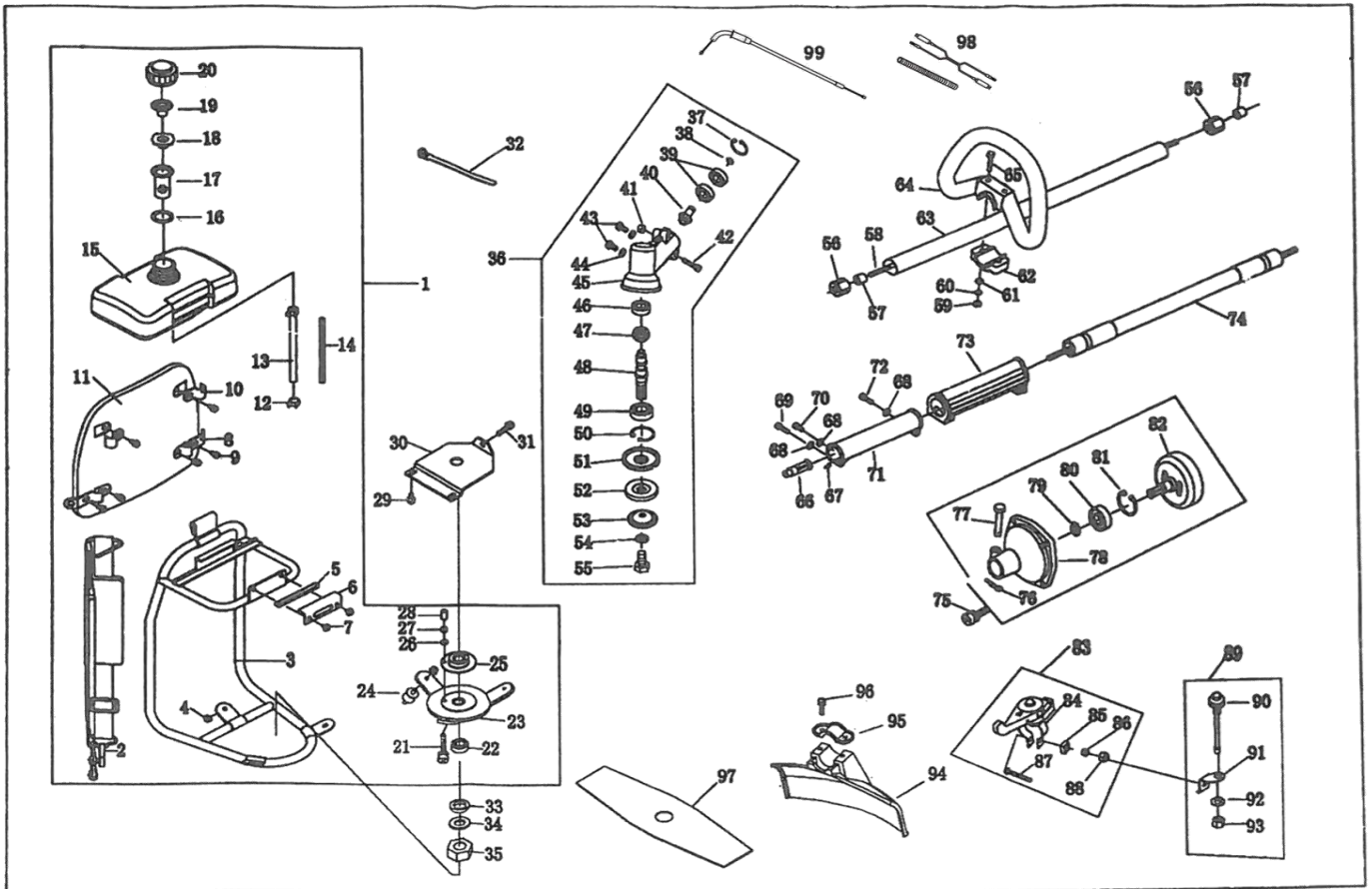


# HZ-33,43 / IZ-33,43 HARZ Brush Cutter (BODY)



No.	Part Name	Qty	No.	Part Name	Qty	No.	Part Name	Qty
2-1	Frame assy	1	2-34	Washer 10	1	2-67	Gear Case Washer	1
2-2	Shoulder Belt Assy	1	2-35	Nut M10	1	2-68	Washer 5	3
2-3	Shoulder Frame Comp	1	2-36	Gear Case Assy	1	2-69	Screw M5 x 25	1
2-4	Nut M6	6	2-37	Stop Ring 26	1	2-70	Bolt M5 x 10	1
2-5	Washer	1	2-38	Stop Ring 10	1	2-71	Joint Pipe	1
2-6	Plate	1	2-39	Bearing 6000-2RS	2	2-72	Screw M5 x 20	1
2-7	Screw M5 x 12	2	2-40	Pinion	1	2-73	Grip	1
2-8	Connector1	2	2-41	Nut M5	2	2-74	Flexible Liner Comp	1
2-9	Screw M5 x 16	6	2-42	Bolt M6 x 12	2	2-75	Bolt M6 x 20	4
2-10	Connector2	2	2-43	Screw M5 x 20	2	2-76	Click	1
2-11	Shoulder Plppte Comp	1	2-44	Oiline Gasket	2	2-77	Pin	1
2-12	Puel Pipe Clip	2	2-45	Gear Case	1	2-78	Clutch Case	1
2-13	Fuel Pipe	1	2-46	Bearing 6000/P5	1	2-79	Stop Ring 15	1
2-14	Fuel Pipe Protection Coil	1	2-47	Gear	1	2-80	Bearying 6202-2RS	1
2-15	Fuel Tank	1	2-48	Gear Shaft	1	2-81	Stop Ring 35	1
2-16	Washer	1	2-49	Bearing 6002-2RS	1	2-82	Clutch Drum Comp	1
2-17	Inner Lid	1	2-50	Stop Ring 32	1	2-83	Trottle Lever	1
2-18	Inner Lid	1	2-51	Cutter Holder	1	2-84	Handcrip	1
2-19	Inner Lid	1	2-52	Cutter Holder Cap	1	2-85	Nut M5	1
2-20	Tank Lid	1	2-53	Bolt Protection Cover	1	2-86	Pipe	1
2-21	Bolt M6 x 30	1	2-54	S. Washer 8	1	2-87	Bolt M5 x 25	1
2-22	Bearing 6202/P5	1	2-55	Bolt	1	2-88	Nut M5	1
2-23	Support Plate	1	2-56	Bushing Assy	5	2-89	Stop Switch	1
2-24	Cushion Rubber Comp	3	2-57	Bushing Assy	5	2-90	Switch	1
2-25	Sealing Plate	1	2-58	Drive Shaft	1	2-91	Fixing Plate	1
2-26	S. Washer 6	1	2-59	Nut M6	2	2-92	S. Washer 5	1
2-27	Nut M6	1	2-60	S. Washer 6	2	2-93	Nut M5	1
2-28	Tube	1	2-61	Washer 6	2	2-94	Safety Guard	1
2-29	Washer M5 x 12	2	2-62	Handle Bracket	1	2-95	Safety Guard Bracket	1
2-30	Engine Base B	1	2-63	Aluminium Pipe	1	2-96	Screw M6 x 25	2
2-31	Screw M5 x 16	1	2-64	Handle	1	2-97	Blade	1
2-32	Wire Clamp Band	2	2-65	Bolt M6 x 45	2	2-98	Stop Wires	1
2-33	S. Washer 10	1	2-66	Adaptor Comp	1	2-99	Throttle Wire	1