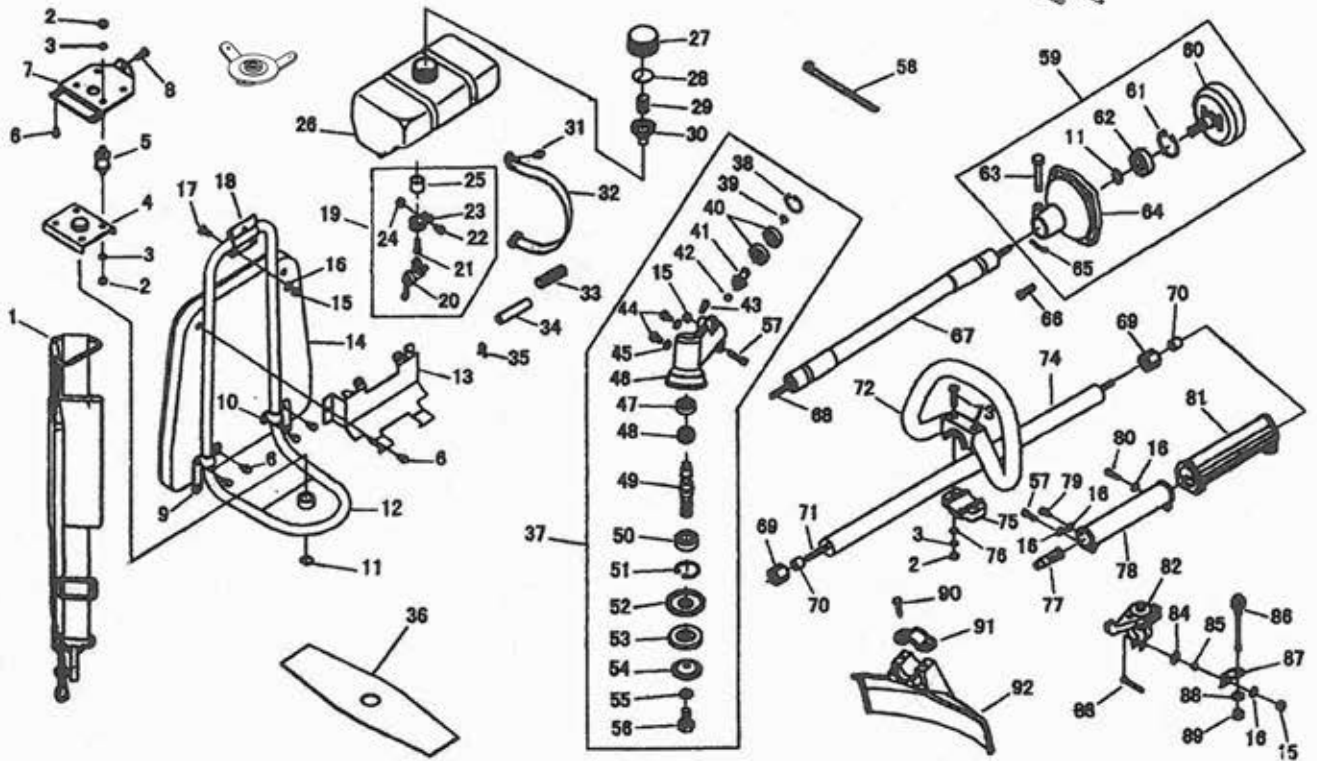


HZ-328 / HZ-1016 BRUSH CUTTER (BODY)



NO.	PART NO.	PART NAME	QTY.	NO.	PART NO.	PART NAME	QTY.	NO.	PART NO.	PART NAME	QTY.
1	BG305.8	SHOULDER BELT ASS'S	1	32	BG-328-5	FUEL TANK BAND	2	63	BG-328.8-2	PIN	1
2	GB/T6170	NUT M6	10	33	BG-328-7	FUEL PIPE PROTECTION COIL	1	64	BG-328.8-1	CLUTCH CASE	1
3	GB/T93	S. WASHER 6	10	34	BG-328-8	FUEL PIPE	1	65	3WF-2.6A-2	CLICK	1
4	BG328.2.2	ENGINE BASE COMP.	1	35	BG-328-3	FUEL PIPE CLIP	2	66	GB/T9074.13	BOLT M6 × 20	4
5	BG415.4	CUSHION RUBBER COMP.	4	36	BG-328-10	BLADE	1	67	BG-328.1.2	FLEXIBLE LINER COMP.	1
6	GB/T9074.4	SCREW M5 × 12	8	37	BG-328.9.5	GEAR CASE ASS'S	1	68	BG-328.1.1	FLEXIBLE SHAFT COMP.	1
7	BG-328.2-1	ENGINE BASE B	1	38	GB/T893.2	STOP RING 26	1	69	BG-328.9.4-5	BUSHING ASS'S	5
8	GB/T9074.4	SCREW M6 × 12	1	39	GB/T894.1	STOP RING 10	1	70	BG-328.9.4-4	BUSHING ASS'S	5
9	BG-328-1	SHOULDER PLATE HOLDER A	1	40	GB/T276	BEARING 6000-2RS/P6	2	71	BG-328.9.4-2	DRIVE SHAFT	1
10	BG-328-2	SHOULDER PLATE HOLDER B	1	41	CG305F.1-2	PINION	1	72	BG-328.10-1	HANDLE	1
11	GB/T894.1	STOP RING 15	2	42	CG415.3-1	STEEL PLATE CAP	1	73	GB/T5783	BOLT M6 × 45	2
12	BG-328.3	SHOULDER FRAME COMP.	1	43	CG415D.6-1	GEAR CASE WASHER	2	74	BG-328.9.4-3	ALUMINIUM PIPE	1
13	BG-328.5	TANK HOLDING METAL COMP.	1	44	GB/T29.2	BOLT M6 × 12	2	75	BG-328.10-2	HANDLE BRACKET A	1
14	BG-328.6	SHOULDER PLATE COMP.	1	45	BG-328.9.5-1	OILING CASKET	2	76	GB/T97.1	S. WASHER 6	2
15	GB/T6170	NUT M5	6	46	BG-328.9.5-6	GEAR CASE	1	77	BG-328.9.4-1	ADAPTOR COMP.	1
16	GB/T93	S. WASHER 5	7	47	GB/T276	BEARING 6000/P6	1	78	BG-328.9.2-2	JOINT PIPE	1
17	GB/T29.2	BOLT M5 × 16	3	48	BG-328.9.5-2	GEAR	1	79	GB/T70.1	SCREW M5. × 10	1
18	BG-328-6	LIFTING METAL	1	49	BG-328.9.5-3	GEAR SHAFT	1	80	GB/T70.1	SCREW M5 × 25	1
19	BG-328.4	PETCOCK ASS'S	1	50	GB/T276	BEARING 6002-2RS/P6	1	81	BG-328.9.2-1	GRIP	1
20	BG-328.4.1	PETCOCK	1	51	GB/T893.2	STOP RING 32	1	82	BG-328.9.3	THROTTLE LEVER ASS'S	1
21		FILTER NET	1	52	BG-328.9.5-7	CUTTER HOLDER	1	83	GB/T818	BOLT M5 × 25	1
22	GB/T65	SCREW M4 × 12	1	53	BG-328.9.5-8	CUTTER HOLDER CAP	1	84	GB/T39	NUT M5	1
23		CLIP	1	54	BG-328.9.5-9	BOLT PROTECTION COVER	1	85	BG-328.9-1	BUSHING	1
24	GB/T39	NUT M4	1	55	GB/T862.1	S. WASHER 8	1	86	BG-328.9.1	STOP BUTTON COMP.	1
25		SHIELD TUBE	1	56	BG-328.9.5-10	BOLT	1	87	BG-328.9-2	STOP BUTTON BRACKET	1
26	BG-328.7-1	FUEL TANK	1	57	GB/T70.1	SCREW M5 × 20	3	88	GB/T7244	S. WASHER 8	1
27	BG-328.7-2	TANK LID	1	58	BG415-1	WIRE CLAMP BAND	2	89	GB/T6172	NUT M8	1
28	BG-328.7-3	SPACER	1	59	BG-328.8	CLUTCH COMP.	1	90	GB/T9074.13	BOLT M6 × 25	2
29	BG-328.7-4	FILTER CORE	1	60	BG-328.8.1	CLUTCH DRUM COMP.	1	91	BG305.13-1	SAFETY GUARD BRACKET	1
30	BG-328.7-5	INNER LID	1	61	GB/T893.1	STOP RING 35	1	92	BG305.13.1	SAFETY GUARD	1
31	GB/T9074.4	SCREW M5 × 20	2	62	GB/T276	BEARING 6202-2RS/P6	1				