

# TS Smart Air Power Screw Air Compressor

系列智慧型螺旋式空氣壓縮機



## High Efficiency, Energy Saving

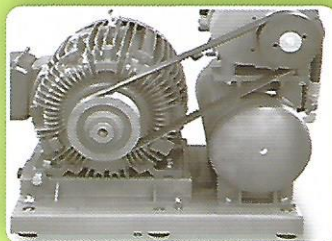
風量足、能耗低





# TS Smart Air Power Series Screw Air Compressor

TS系列 智慧型螺旋式空氣壓縮機



## Power Transmitting System

- High efficient power transmitting mechanism to keep the best belt tension under operation.
- With buffer Pads to maintain low vibration and low noise.

## 傳動系統

- 高效率傳動系統，維持最佳皮帶張力。
- 緩衝裝置，使運轉平順，振動與噪音低。



## Multi-functional Valve Assembly

- Combine the control valves and oil/air filters into one compact unit to save pipings and for easy maintenance.

## 多功能組合閥

- 油濾、油氣功能組合，配管少、保養方便。
- 管路壓損小。



## Oil/Air Separator Element

- To efficiently separate the compressed air from oil.

## 油氣分離與元件

- 確保油霧與壓縮空氣，有效分離，出氣含油量低。



## Excellent Cooling System

- Combine oil and air cooling element into one compact unit to reach high efficient cooling effect.

## 優異冷卻系統

- 採用高環境溫度設計冷卻器與風扇，冷卻效果佳。



## 1 User-friendly Control Panel

- 人性化控制面板

## 2 Adopt Very Reliable Electric

- Components For The Control System
- 控制系統採用非常可靠的電子零件

## 3 Oil/Air Separator Element

- 油氣分離元件

## 4 Oil Separator Tank

- 油氣分離槽



此系列空氣壓縮機含原裝進口的高效主機，堅實的全密馬達，精密的油過濾系統，模組化的進氣調節系統，達到完美的組合及最高的信賴度。  
This series of compressor is equipped with highly efficient screw air-end, fully enclosed powerful electric motor, precise oil filtering system and modulating air-suction regulator... etc, to reach to a complete unit with perfect integration and highest reliability.

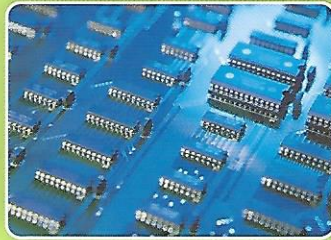




# Low Noise

低噪音

www.swanair.com.tw



**Powerful** 超強力  
**Low Noise** 低噪音  
**High Reliability** 高信賴

### Humanized Design / Powering The Future

Swan Screw Air Compressors are equipped with high performance motors, advanced controllers, rigid structure design, and excellent cooling air circulating system to guarantee their high durability.

### 人性化設計 / 引領未來

天鵝牌螺旋式空壓機，搭載高效率馬達，先進控制器，堅固的結構設計，及最佳的冷卻氣循環系統，得以確保其高耐用性。

#### 1 High Levels Of Distinctive Modular Design

With distinctive modular design and friendly operating system, the new developed TS series is able to provide reliable operation, quiet running, and easy maintenance. Its highly efficient air-end is very dependable under long period of continuous operation.

##### ● 穩定可靠的最佳選擇

新一代TS系列，以模組化的設計理念，強化整體信賴性、維護簡易性與運轉安靜性。主機與精密控制零件，以穩定的品質貼合使用者真正需求。

#### 2 Versatile And Users' Friendly Control System

The machine is equipped with versatile module control, user's friendly operation monitor, multi-units remote control and overload protection device... etc., which make it easy to operate and maintain.

##### ● 簡明實用的控制系統

人性化的流程式控制面板，清晰顯示運轉狀況以易於控制及安排保養；支援遠端與多機操控，強化模組式電控與過載保護。

#### 3 Powerful And Quiet Running Condition

High rigid structure with anti-noise and high efficient air circulation system to ensure silent and continuous running capability.

##### ● 耐用低噪音的運轉環境

結實的框架是結構與優良的噪音隔音，降低運轉時產生的噪音與震動。高效率冷卻器設計，確保長期的運動效能。

#### 4 Easy Maintenance

Easy to access to all related components, make trouble-shooting and general maintenance easy and inexpensive.

##### ● 快速方便的保養設計

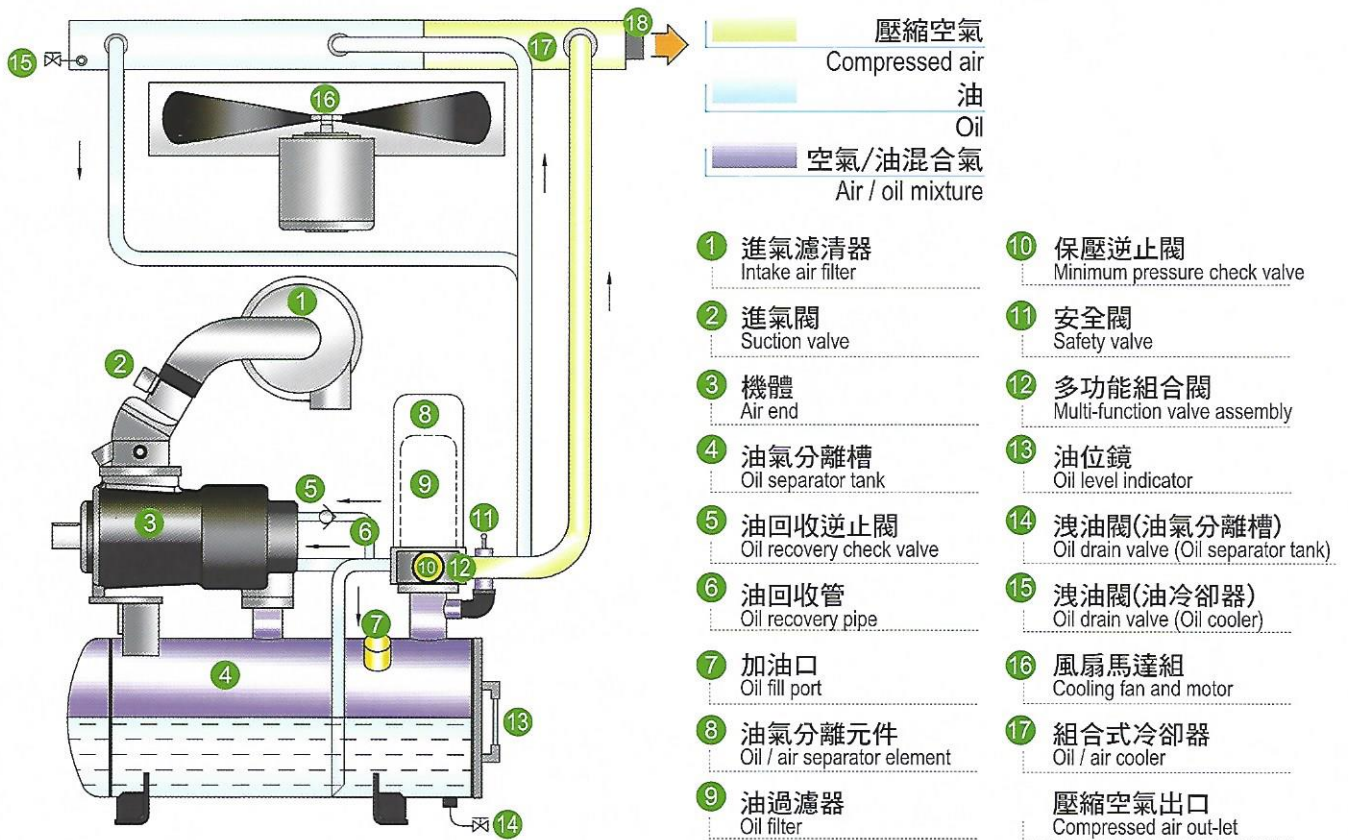
維護調校採用向查檢點配置，易於檢查與耗材更換。門扣式钣金設計，拆裝方便，省時省力。





# Air / Oil Flow Diagram

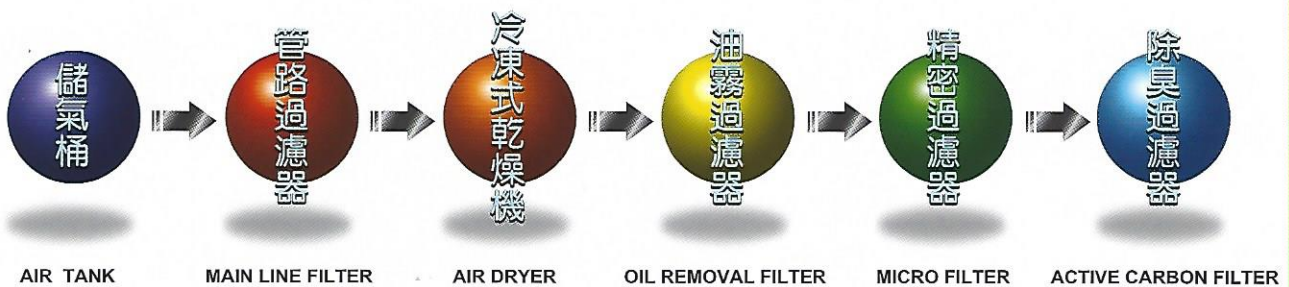
空氣/油 流程圖



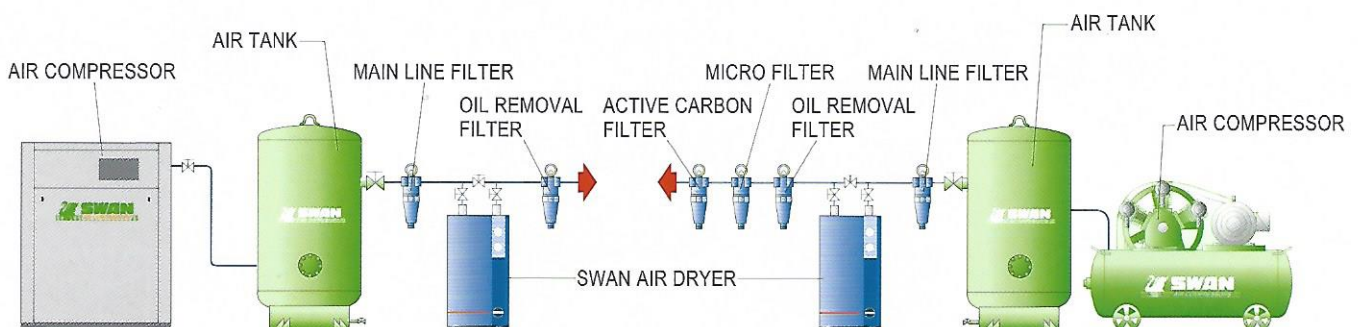
## Compressed Air Cleaning System

Comprehensive range of filters to meet the requirement from industrial user.

### 空 氣 清 淨 化 系 統



• 因應客戶不同的用途，不同的清淨化需求，提供不同等級的過濾系統。





# TS Smart Air Power Series Screw Air Compressor

TS系列 智慧型螺旋式空氣壓縮機

*Superior Performance*

*Highest Reliability*

- **Reliable** 穩定可靠
- **Versatile** 功能齊全多樣
- **Full Range Solution** 全方位解決方案

型式	Model	TS-11-S	TS-15-S	TS-15-A	TS-22-S	TS-37-S	TS-45-H	TS-55-C	TS-75-C
Suction Conditions 吸氣條件	壓力 Pressure (1ATM)	ATM 大氣壓							
	溫度 °C Temperature	2~40(Max.45)	2~40(Max.45)	2~40(Max.45)	2~40(Max.45)	2~40(Max.45)	2~40(Max.45)	2~40(Max.45)	2~40(Max.45)
Discharge Conditions 排氣條件	壓力 Pressure (kg/cm <sup>2</sup> .G)	8.5 10 13	8.5 10 13	8.5 10 13	8.5 10 13	8.5 10 13	8.5 10 13 ※	8.5 10 13	8.5 10 13
	溫度 °C Temperature	Ambient Temp.+13 °C 環境溫度+13 °C							
電源頻率	Frequency (HZ)	50 / 60	50 / 60	50 / 60	50 / 60	50 / 60	50 / 60	50 / 60	50 / 60
排氣量	FAD m <sup>3</sup> / min	1.6 1.4 1.1	2.0 1.9 1.6	2.2 1.9 1.6	3.4 3 2.4	5.9 5.3 4.5	7 6.3 5.6	8.6 7.8 6.6	10.6 9.8 8.5
實際馬力	Motor Output KW (HP)	11KW(15HP)	15KW(20HP)	15KW(20HP)	22KW(30HP)	37KW(50HP)	45KW(60HP)	55KW(75HP)	75KW(100HP)
冷卻方式	Cooling	Air-cooled 氣冷式							
傳動方式	Drive System	Belt drive 皮帶傳動							
出風口徑	Air Delivery Connection	1"	1"	1"	1-1/4"	1-1/2"	1-1/2"	2"	2"
外型尺寸	Dimension (mm) LxWxH	780X950X1100	780X950X1100	950X1020X1250	920X1100X1350	1200X1200X1650	1200X1200X1650	1700X1400X1650	1700X1400X1650
重量	Weight (kg)	400	410	520	600	850	893	1350	1450

※Keep on developing for excellence, we reserve the right to alter specifications without prior notice.

本公司不斷研究改進，規格如有變更，恕不另行通知。

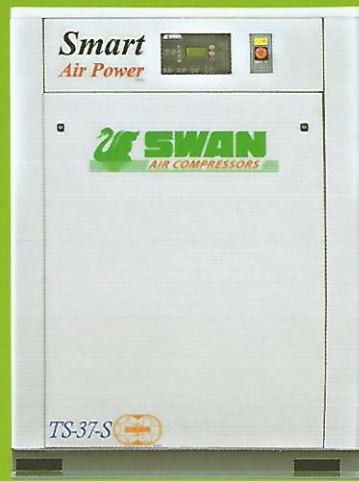
※13 kg / cm<sup>2</sup>.G working pressure is optional, please consult with your agent if needed.

13 kg / cm<sup>2</sup>.G 排氣壓力屬於選用功能，其價格及交期另議。





# 15HP~100HP Powerful Reliable 超強馬力 值得信賴



CE



ISO 9001:2008



TC-2016.03-AB

Since 1956

[www.swanair.com.tw](http://www.swanair.com.tw)



東正鐵工廠股份有限公司  
TONG CHENG IRON WORKS CO., LTD

公司: 台中市東區信義街116號  
TEL: 886-4-2261-2135 FAX: 886-4-2261-5465

廠址: 台中市南區大慶街二段16號  
TEL: 886-4-2261-2135 FAX: 886-4-2262-8246

台北營業所: 新北市五股區五權五路43號

TEL: 02-2299-1285 FAX: 02-2298-2296

台中營業所: 台中市南區大慶街二段16號

TEL: 04-2261-2135 FAX: 04-2261-5465

台南營業所: 台南市永康區中正南路635號

TEL: 06-253-9848 FAX: 06-253-9849

Head Office :

No.16, Ta Chin St. Sec. 2, Taichung, Taiwan

TEL: 886-4-2261-2135 FAX: 886-4-2262-8246

Reg. Office :

116 Shing Yee St., Taichung, Taiwan

TEL: 886-4-2261-2135 FAX: 886-4-2261-5465