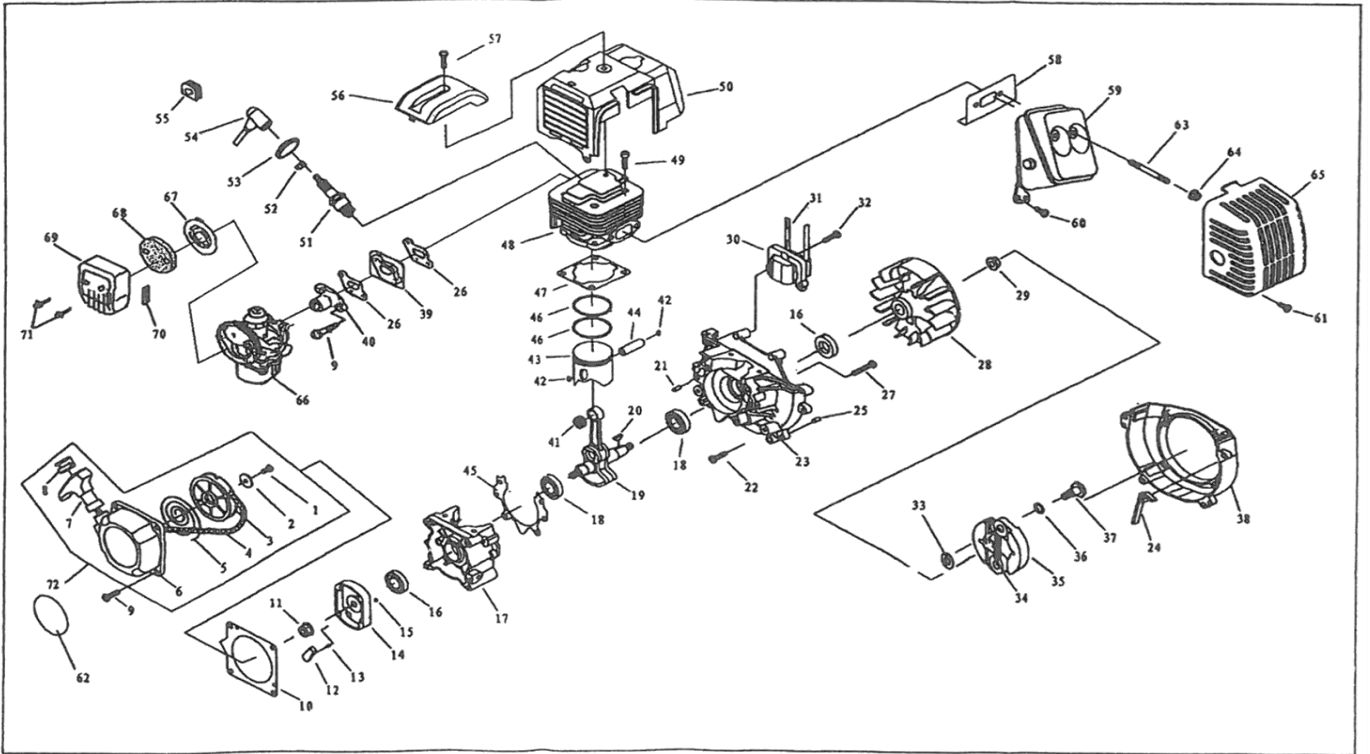


## HZ-33 / IZ-33 (1E36F-2 GASOLINE ENGINE)



No.	Part Name	Qty	No.	Part Name	Qty	No.	Part Name	Qty
1	Screw M5 x 12	1	25	Pin B4 x 10	2	49	Screw M5 x 16	4
2	Washer	1	26	Gasket	2	50	Guide Cover A	1
3	Start Rope Reel	1	27	Screw M5 x 30	4	51	Spark Plug	1
4	Rope	1	28	Magneto Rotor		52	Spring	1
5	Recoil Spring	1	29	Nut M8		53	Plug Cap	1
6	Start Cover Ass'y	1	30	Ignition Coil	1	54	Cap	1
7	Start Handle	1	31	Cord Comp.	1	55	Plug	1
8	Ring	1	32	Bolt M5 x 20	2	56	Cover	1
9	Screw M5 x 20	6	33	Washer B	2	57	Screw M5 x 20	1
10	Gasket	1	34	Spring	1	58	Gasket	1
11	Nut M8	1	35	Expander	2	59	Muffler	1
12	Start Claw	1	36	Washer	2	60	Screw M5 x 12	1
13	Start Spring	1	37	Screw Pin	2	61	Screw M5 x 12	1
14	Start Reel	1	38	Fan Cover	1	62	Label	1
15	Stop Ring 4	1	39	Insulator	1	63	Bolt	2
16	Oil-seal	2	40	Pipe	1	64	Nut	2
17	Crank Case	1	41	Bearing	1	65	Muffler Cover	1
18	Bearing 6201/P5	2	42	Ring	2	66	Carburetor	1
19	Crank Shaft	1	43	Piston	1	67	Cleaner Inside Cover	1
20	Key 3 x 5 x 13	1	44	Piston Pin	1	68	Filter Net	1
21	Pin B4 x 10	2	45	Gasket	1	69	Cleaner Outside Cover	1
22	Screw M5 x 12	1	46	Piston Ring	2	70	Label	1
23	Crank Case	1	47	Gasket	1	71	Screw M4 x 25	2
24	Flash Pan	1	48	Cylinder	1	72	Start	1