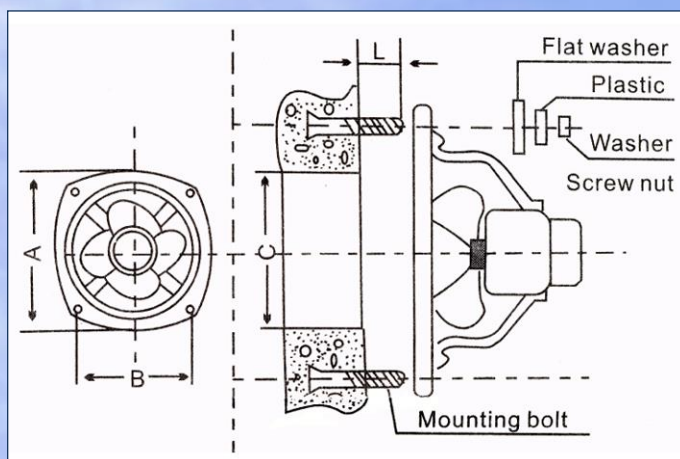


# HEAVY DUTY EXHAUST FAN



Size (mm)	A(mm)	B(mm)	C(mm)	L(mm)
300 (12")	386	308	Ø326	≥25
400 (16")	480	380	Ø416	≥25
450 (18")	556	432	Ø476	≥30
600 (24")	720	570	Ø620	≥30

Model	Size (mm)	Voltage (v)	Air Volume (m <sup>3</sup> /min)	Speed (rpm)	Power (w)
<b>FA-30II</b>	300 (12")	220~240	32	1400	130
<b>FA-40II</b>	400 (16")	220~240	68	1400	220
<b>FA-45II</b>	450 (18")	220~240	100	1400	380
<b>FTA-45II</b>	450 (18")	415	100	1400	380
<b>FA-60II</b>	600 (24")	220~240	115	960	400
<b>FTA-60II</b>	600 (24")	415	115	960	400